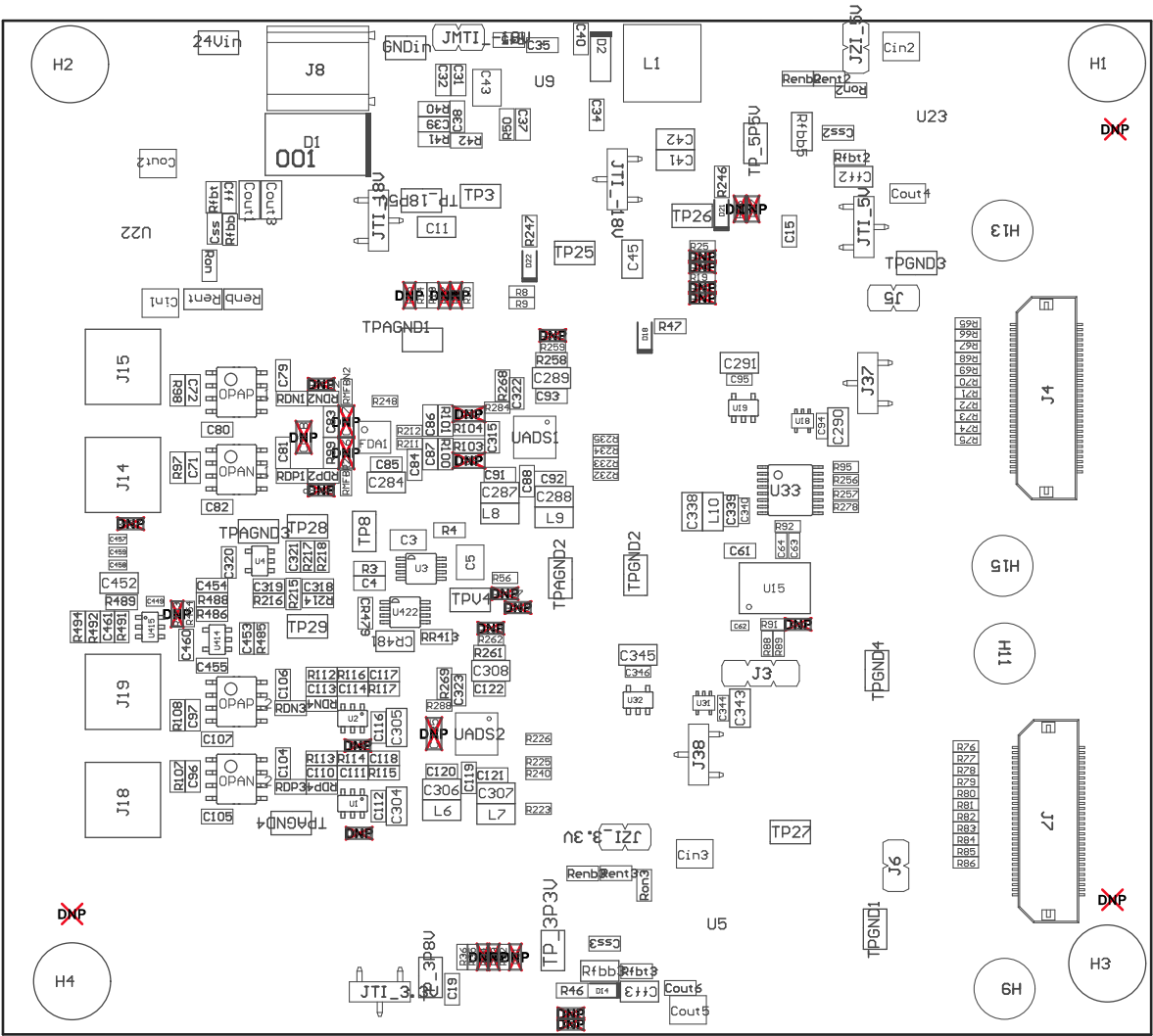
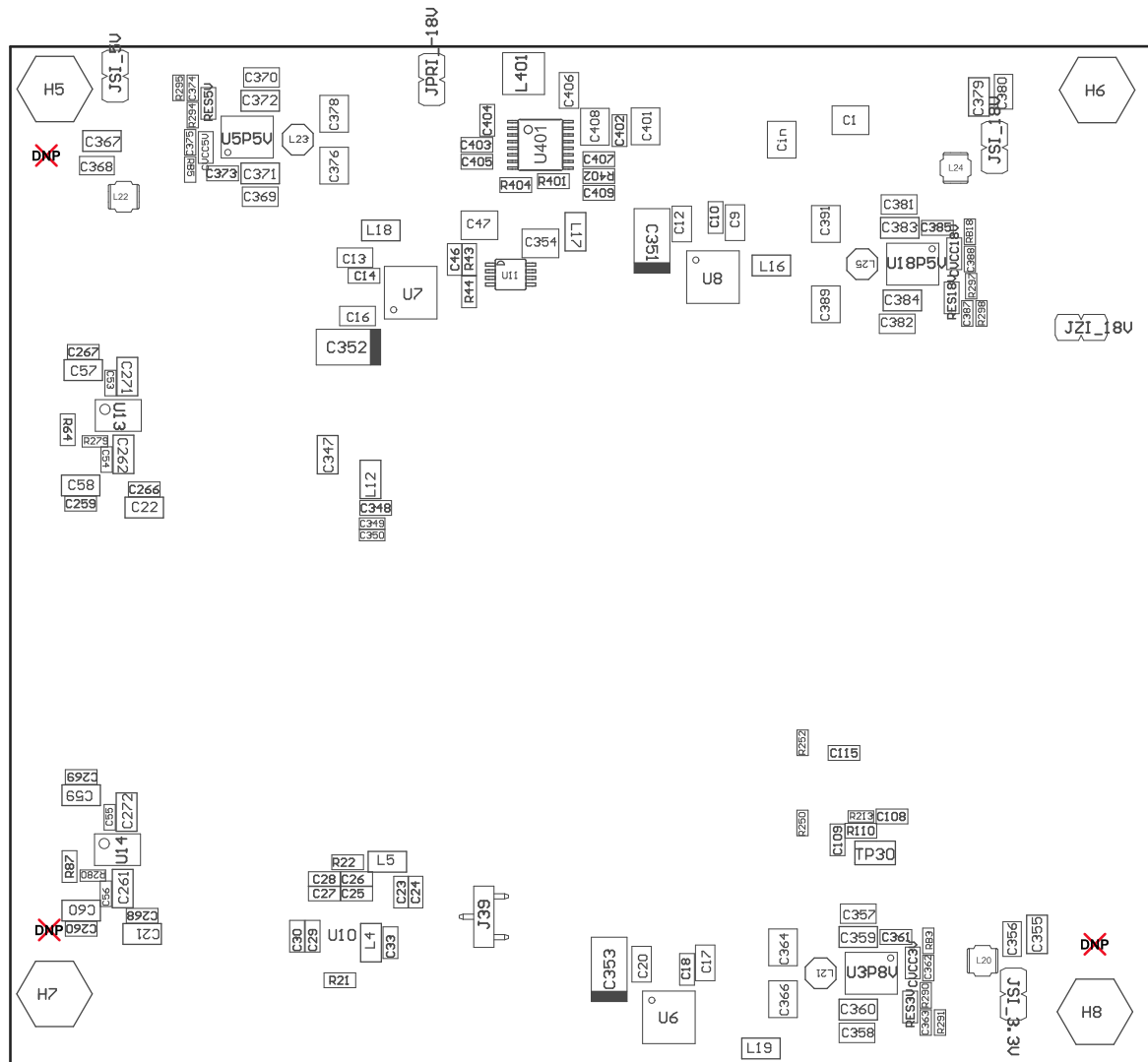


Z22 ■These assemblies are ESD precations shall be observed.  
Z23 ■These assemblies must be clean and free from flux and all contaminants. Use of no clean flux is not acceptable.  
Z24 ■These assemblies must comply with workmanship standards IPC-A-610 Class 2, unless otherwise specified.



COMPONENTS MARKED 'DNP' SHOULD NOT BE POPULATED.  
ASSEMBLY VARIANT:

PCB VIEWED FROM TOP SIDE	BOARD #: TIDA-01054	REV: E1	SUN REV: Not In VersionControl
	TID #: 01054		
PLOT NAME = Top Assembly Drawing	GENERATED : 2017/12/11 9:43:36	TEXAS INSTRUMENTS	



COMPONENTS MARKED 'DNP' SHOULD NOT BE POPULATED.  
ASSEMBLY VARIANT: 001

PCB VIEWED FROM BOTTOM SIDE	BOARD #: TIDA-01054	REV: E1	SVN REV: Not In VersionControl
	TID #: 01054		
PLOT NAME = Bottom Assembly Drawing	GENERATED : 2017/12/11 9:43:38	TEXAS INSTRUMENTS	